

WELCOME

*Exclusive use, from a Remarkable Setting to the Crowning Place of Scottish Kings
– Susan Reid Collection offers luxury, exclusive use properties in Scotland.
When luxury becomes elegance and sophistication.*



PROPERTY LOCATIONS



CANDACRAIG



STUCKDARACH



STUCKGOWAN



SCONE PALACE



AYRSHIRE ESTATE



CASTLE
ABERDEENSHIRE



STUCKTAYMORE



HAWKWOOD
COLLECTION



AYRSHIRE CASTLE

SUGGESTED ITINERARY



AYRSHIRE CASTLE
AYRSHIRE 2 NIGHTS

Golfing
Fishing
Culzean Castle
Ayr, Troon and other seaside coastal towns



CANDACRAIG, ABERDEENSHIRE
2 NIGHTS

Fishing
Shooting
Golfing
Walking
Whisky Distilleries
Balmoral Castle
Braemar



SCONE PALACE, PERTHSHIRE
2 NIGHTS

Fishing
Shooting
History
Whisky Distilleries
Perth Racecourse

CANDACRAIG, SCOTTISH HIGHLANDS



A baronial mansion which is perfect for large family gatherings and business meetings.

Candacraig is an inspiring retreat in the Scottish Highlands. Steeped in history and surrounded by the wild beauty of the Cairngorms National Park, this breath-taking baronial mansion is the perfect place to stay. Previous owners of the property included Anita and Gordon Roddick founders of the Body Shop who undertook

major renovations before selling to Billy Connolly and Pamela Stephenson. Candacraig attracted many Hollywood celebrities as regular guests.

Guests enjoy exclusive use of the impressive formal Dining Room, Drawing Room, Billiard/Games Room and Whisky Library that through many years of collection provides a leading selection of single malts for our guests to sample.

12 stunning and individually decorated bedrooms with every attention to detail being second to none from our Egyptian cotton bedding to L'Occitane toiletries. The main house therefore can sleep 24 guests and we also

offer additional accommodation for 4 guests in the Upper and Lower Chalet adjacent to the main house.

Within the grounds of this beautiful property, guests have full access of 18 acres of private woodland and manicured lawns, including a large Victorian Walled Garden, private Lochan fed by the River Don, perfect for catching trout for dinner.

*A remarkable setting...
for a business meeting;
to relax and discover
tranquillity; to view
Scotland's beauty.*

Bedrooms	12
Conference rooms	3
Boardroom style	20
Theatre style	20
Banquet (sit-down dining)	32
Reception (stand up buffet)	50
Price	£4,000 to £6,500 rental per night

CANDACRAIG, SCOTTISH HIGHLANDS



1. River Don Fishing 11 miles
2. Balmoral Castle – 16 miles
3. Ballater – 16 miles
4. Royal Lochnagar Distillery – 17 miles
5. Braemar – 24 miles
6. Glenlivet Distillery – 32 miles
7. Aberdeen Airport – 40 miles
8. Glenfiddich Distillery 36 miles

SCONE PALACE, PERTHSHIRE



Scone Palace has an exciting and colourful history as one of Scotland's most important stately homes.

In the intervening centuries, it has been the seat of parliaments and the crowning place of the Kings of Scots, including Macbeth and Robert the Bruce. The Palace houses an outstanding collection of antiques, paintings and rare artefacts and the grounds are renowned throughout the world, making the stately home one of the most popular attractions in Scotland.

Poised above the River Tay in Perthshire, Scone Palace overlooks the routes north to the Highlands and east through Strathmore to the coast. The Grampian

mountains form a distant backdrop, and across the river stands the city of Perth.

Scone Palace provides a magnificent setting for events. Whether you are planning a corporate event in Scotland, require hospitality, a conference or need a venue for a product or car launch, a range of events can be accommodated.

All of the Palace State Rooms can be reserved exclusively for your event. A guided tour of the Palace will be included as part of your evening if you wish it.

Dinner may be served in the State Dining Room, which seats 12 to 24 persons around the table made for Queen Victoria's visit, The Long Gallery, where up to 110 persons can be accommodated, or within the Murray Suites, which accommodate 50 guests. Business conferences and seminars for up to 60 delegates can now be held throughout the year in the Murray Suite. These are sympathetically restored rooms, combining

traditional furnishings with modern technologies and the utmost in discretion. From November to March, the State Rooms offer capacity for 200+ delegates.

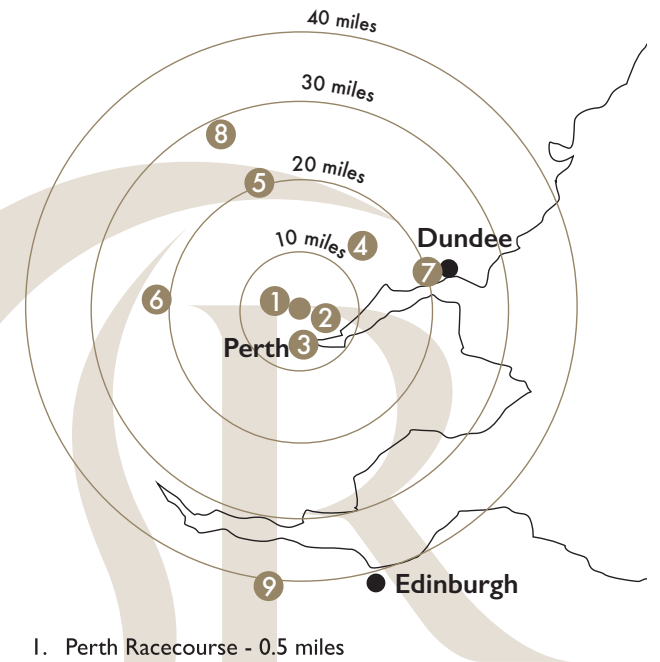
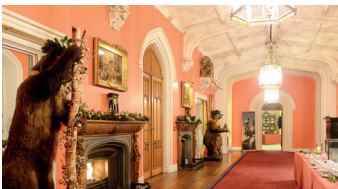
Scone Palace also offers exclusive use overnight accommodation. From the Balvaird Wing with 3 stunning rooms into the Private Wing offering a further 10 bedrooms, enjoy a unique and memorable experience.

With over 100 acres of historic Parklands, the natural environment provides a stunning backdrop for outdoor activities such as laser clay shooting, falconry, and quad biking.

*Visit the Crowning Place
of the King of Scots.*

Bedrooms	14
Conference rooms	4
Boardroom style	16
Theatre style	40
Banquet (sit-down dining)	60
Reception (stand up buffet)	100
Price all-inclusive per night	£3,500 to £7,000

SCONE PALACE, PERTHSHIRE



1. Perth Racecourse - 0.5 miles
2. Fishing and Sporting - 1 mile
3. Perth - 2 miles
4. Blairgowrie Golf Club - 14 miles
5. Famous Grouse Experience Whisky - 20 miles
6. Gleneagles - 22 miles
7. Dundee Airport - 21 miles
8. Blair Athol Distillery - 27 miles
9. Edinburgh Airport - 42 miles

HAWKSWOOD COLLECTION, ST ANDREWS



The perfect house for golfing parties and leisure stays and a luxury venue for discrete private or corporate meetings, stays or special occasions.

Hawkswood House and The Roundel are two private and exclusive use 5 star Scottish properties for hire set in the picturesque hamlet of Peat Inn, near St Andrews, Scotland.

Each property can be rented separately or clients can book both properties which are part of the Hawkswood Collection. This will give you a total of 10 en-suite luxury bedrooms across the two properties.

For keen golfers, Hawkswood House and The Roundel are the ultimate private properties, with easy access to dozens of fine courses. Whilst golf is bound to be the main attraction, they both have plenty to offer for romantic breaks, longer holidays, or groups of friends looking for a relaxing country escape.

In order to improve your short game skills, before visiting one of the great golf courses in nearby St Andrews, we have built your very own Short Game Area in our

grounds private with each house and our new 250 yard driving range opens by Summer 2017.

Exclusively Yours Wedding Package – The family own all three properties on the Estate combining Hawkswood House, The Roundel and Bowhill Bed and Breakfast along with extensive surrounding grounds with sea views.

“Thank you for our wonderful stay. The House is ideal, every detail perfect”

Nick Faldo, Family & Friends,

144th Open Championship, July 2015

Bedrooms	5 in each house, 10 in total
Conference rooms	2
Boardroom style	20
Theatre style	20
Banquet (sit-down dining)	40
Reception (stand up buffet)	60
Price	£650 to £950 per house per night

HAWKSWOOD COLLECTION, ST ANDREWS



1. Peat Inn Restaurant - 1 mile
2. St Andrews - 7 miles
3. Links of St Andrews Golf Courses - 8 miles
4. Kingsbarns Golf Course - 12 miles
5. Dundee Airport - 19 miles
6. Edinburgh Airport - 41 miles

CASTLE ABERDEENSHIRE



A Castle featured as one of only four properties in the PBS series The Great Estates of Scotland.

A private family home which only opens its doors by arrangement for exclusive tours, private dining, meetings and weddings. Accommodation for groups of six or more guests only. Discreetly we provide world-class hospitality to discerning travellers.

This is a rare opportunity to step, for a while, into the lives of a couple who have dedicated their lives to the preservation of a building, its history and culture, while striving to sustain a rural community in the modern world. Don't miss it.

Bedrooms	15
Conference rooms	3
Boardroom style	24
Theatre style	80
Banquet (sit-down dining)	60
Reception (stand up buffet)	120
Price	From £3,000 all inclusive

The Castle is the private home of a Scottish Laird and his Lady. During your exclusive and very entertaining visit Andrew & Nicky Bradford will share their extraordinary life with you in their Little Bit of Heaven – which is how one visitor described their beautiful house and gardens which stand hidden from public view on their 3,000 acre estate.

You'll be treated like the Laird's personal guests and during your stay at the castle you'll find what Queen Elizabeth did in the Great Hall and how Tutankhamun, Macbeth, Guy Fawkes, Jane Austen, Alfred Brendel and Dracula fit into the story.

Inspiration from a Princess and perspiration have combined to produce a series of beautiful gardens.

Learn how this estate, in addition to farming, forestry, hunting, fishing and shooting, cares for wildlife and the environment and strives to support a rural community.

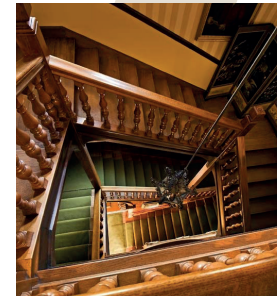
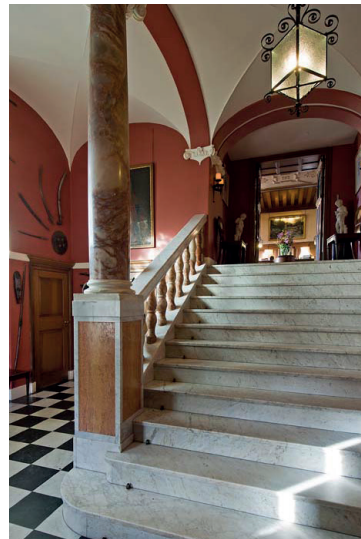
Dine with the Bradfords in the magnificent Dining Room surrounded by family portraits from the last 400 years – and hear their stories. The delicious food will be prepared by the Laird's personal chef.

This is a time for all the senses

- See the extensive Highland views which reach to the Queen's Balmoral Estate and beyond while nearer to hand you can take time to enjoy the gardens, Dutch Old Masters and many other treasures.
- Smell the fine oak panelling mingled with the hint of wood smoke from the log fire, the roses in the garden and the wonderful wines.
- Feel the smooth polished wood of a 340- year old table and finely balanced cutlery.
- Hear the chime of a clock that's been keeping time for over 330 years and the playing of the Steinway piano. Play it yourself if you want.
- Taste not only the delicious food but also sample some of the Castle's yummy food products and, of course, the wines.

This is a time which not only fills your senses but creates wonderful memories of your visit and you'll also be given a potentially life-saving tip as to what to do when being eaten by a tiger.

CASTLE ABERDEENSHIRE



1. Deeside Activity Park - 4 miles
2. Falls of Feugh - 9 miles
3. Crathes Castle & Go Ape - 12 miles
4. Castle Fraser & Gardens - 16 miles
5. Drum Castle and Gardens - 17 miles
6. Aberdeen Airport - 23 miles

AYRSHIRE CASTLE, AYRSHIRE



Ayrshire Castle is one of the finest Regency Castles in Scotland. Set in over 200 acres of beautiful parkland and private gardens in the heart of unspoilt Ayrshire, this Grade A listed Castle is a remarkable piece of Scottish history.

Bedrooms	15
Conference rooms	4
Boardroom style	30
Theatre style	120
Banquet (sit-down dining)	100
Reception (stand up buffet)	120
Price	from £5,000 per night

Standing in its elevated position above parkland and the curving Waters of Girvan, Ayrshire Castle enjoys a secluded environment while being within easy reach of all major transport links, as well as those attractions which make Scotland and its history so appealing to the outside world.

The accreditation as a 5 star Exclusive Use Venue by Scottish Tourism Board affirms the prestige of Ayrshire Castle, making it the ideal venue for any occasions. Whether you are looking for a corporate retreat, a private house party, a fairy-tale wedding, a golfing holiday, or just simply a daytime meeting or a gala dinner, Ayrshire Castle will spoil you with choices and offer you an unforgettable exclusive experience for many years to come.

AYRSHIRE CASTLE, AYRSHIRE



1. Culzean Castle - 11 miles
2. Robert Burns Museum - 12 miles
3. Turnberry - 13 miles
4. Prestwick airport - 21 miles
5. Troon - 22 miles
6. Glasgow International airport - 54 miles

AYRSHIRE ESTATE, AYRSHIRE



An historic country house dating back to the 14th Century set in over 2000 acres of gardens, parkland and Estate in the heart of rural Ayrshire, on the west coast of Scotland.

The interiors of the house are refined and elegant with many family treasures including a wealth of antiques and art and enjoyed by shooting parties, corporate think tanks as well as for golfing tours. Some of the world's best-rated courses are within a short distance including Troon, Prestwick, Western Gailes, Turnberry as well as

Dundonald Links (sister course of Loch Lomond), host of the Scottish Open and Ladies Scottish Open.

The House is also ideal for private parties and family reunions. With several large reception rooms, two dining rooms seating up to 30 guests, the house creates the

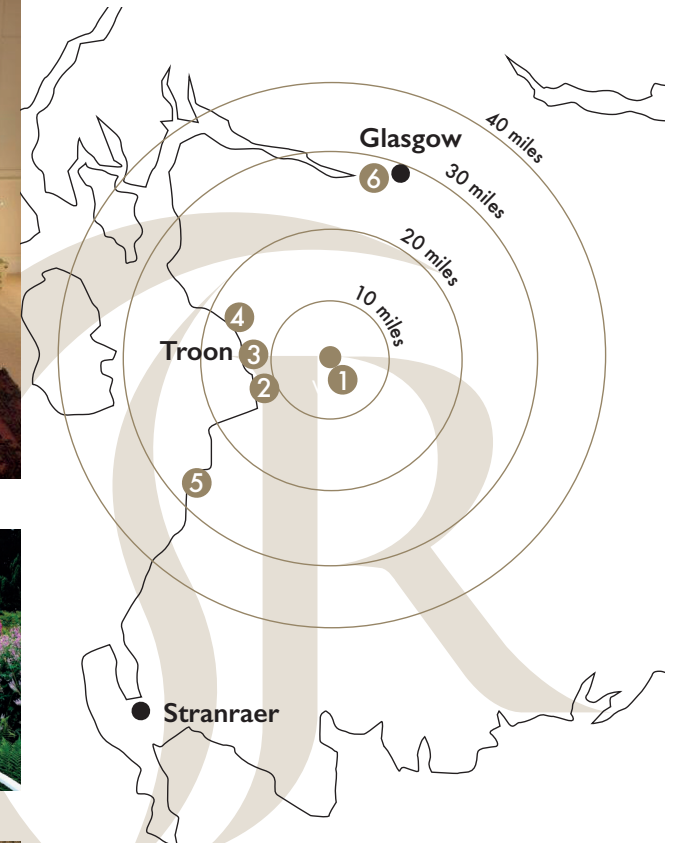
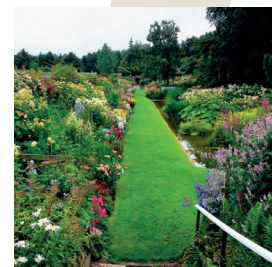
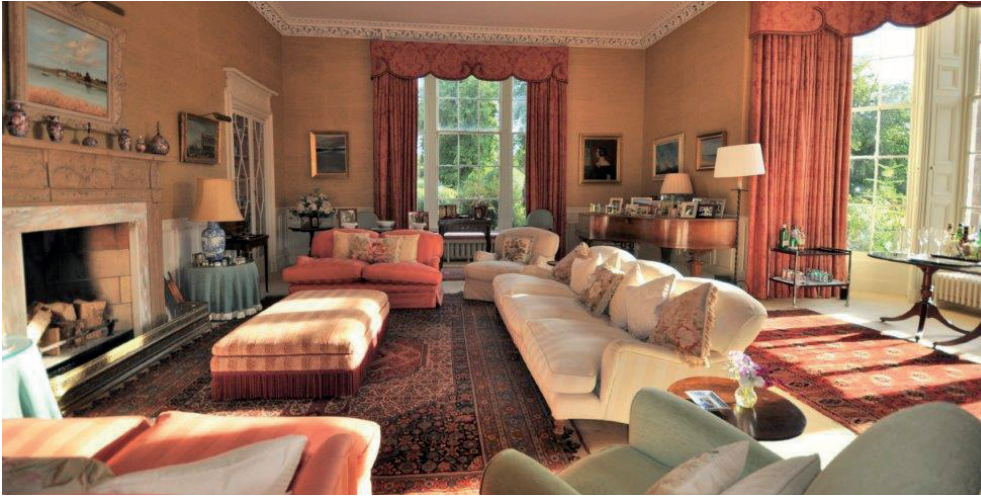
perfect setting for a "house party". The friendly household staff look after the party and the excellent French Chef applies his classical skills with traditional British dishes using fresh, local and seasonal ingredients and especially those native to Scotland. The Estate has two herds of Jersey cows producing delicious dairy produce.

The house is also famed for its formal 10 acre gardens which have featured in many titles and includes a traditional walled garden, 90m long herbaceous border, as well as rock and water gardens. Adjoining the house is a croquet lawn with dining terrace and wood-burning pizza oven.

Bedrooms	10
Conference rooms	2
Boardroom style	20
Theatre style	20
Banquet (sit-down dining)	20
Reception (stand up buffet)	20
Price	From £2,500

Activities: Include fishing, clay-pigeon shooting, tennis, cycling, billiards and croquet. The shooting season runs from 1 October to the January and the Estate provides a good choice of drives to allow parties to shoot over 2 days.

AYRSHIRE ESTATE, AYRSHIRE



1. Carnell Estate shooting - 1 miles
2. Prestwick Airport - 12 miles
3. Royal Troon - 13 miles
4. Western Gables - 16 miles
5. Turnberry Golf Course - 26 miles
6. Glasgow Airport - 32 miles

STUCKTAYMORE, LOCH TAY



Part of the Stuckgowan Estate Collection of properties - Stucktaylor has beautiful grounds extending to about four acres. There are lawns surrounding the house and rolling towards the fields leading to Loch Tay.

Part of the Stuckgowan Estate Collection of properties - Stucktaylor has beautiful grounds extending to about four acres. There are lawns surrounding the house and rolling towards the fields leading to Loch Tay.

There are woodlands to the west of the house and a tumbling burn cascades through the trees, crisscrossed

by bridges linking the paths that meander through the magnificent variety of mature trees. Hidden in the woods there are three fire pits ranging from magnificent to intimate. The larger fire pit is perfect for a BBQ.

13 ensuite bedrooms able to accommodate 29 people. All rooms are king with one twin and three rooms offering triple occupancy. A large kitchen and breakfast room with Aga, Dining room with table and chairs to seat 26. Our Sitting room leading on from the dining room enjoys

breathtaking views over Loch Tay. The Large stone built 'Snug' with a significant open fire and our Library, also with open fire, TV and baby grand piano. There is a Utility / Boot room with washing machine and tumble dryer and on the Lower Ground Floor a Media and entertainment room with 80' inch screen TV, DVD player and full sky package and Xbox One. Games room with pool table.

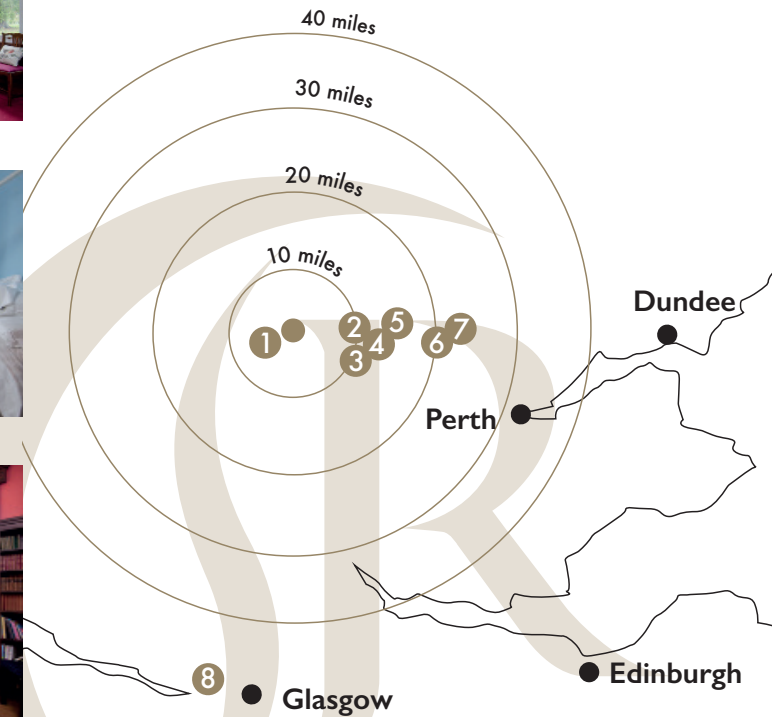
Outdoor Space offers a large terrace with outside dining and a 7 seater hot tub all overlooking Loch Tay.

Loch Tay is a magnificent dark stretch of water, 15 miles (24 km) long and around 508 ft deep. It's the largest loch in Perthshire and one of the deepest in Scotland. To the north, the loch is flanked by the impressive bulk of the Ben Lawers mountain range, much of which is designated as a National Nature Reserve. Loch Tay is popular with sailing and water-sports enthusiasts and the small shingle beach near Kenmore is perfect for sunbathing.

Bedrooms	13
Conference rooms	2
Maximum boardroom style	26
Banquet (sit-down dining)	26
Reception (stand up buffet)	26

A magnificent memorable setting...

STUCKTAYMORE, LOCH TAY



1. Falls of Dochart - 1 mile
2. The Scottish Crannog Centre - 13 miles
3. Loch Tay Safaris - 13 miles
4. Loch Tay Boating Centre - 13 miles
5. Mains of Taymouth Golf Course - 14 miles
6. Splash White Water Rafting - 22 miles
7. Dewars Aberfeldy Distillery - 23 miles
8. Glasgow Airport - 62 miles

STUCKGOWAN, LOCH LOMOND



Part of the Stuckgowan Estate Collection of properties - Stuckgowan dates from before 1820 and was built with elegant lancet windows and arched doorways as Gothic and Norman references but above all with grace and balance.

Brought into the 21st century with gorgeous, carefully detailed renovations with stunning views of Loch Lomond. Easy access to the house from the Glasgow airport, or take a train from Balloch or Tarbet Stations.

With a breakfast bar and window seating area that holds 14, the kitchen is big enough to accommodate lavish breakfasts or late-night gatherings. There's also a study, a gym, a snooker table and a host of other thoughtful details to make your stay in this unmatched location incredible.

The snug is a comfortable room looking out to the gardens and the Loch with games, TV and a telescope to watch the stars at night. Also at the front is the luxurious lounge with log fire and leads into the dining room

catering comfortably up to 20 guests. The media cinema room is a perfect distraction to pass the time of an afternoon or keep the children amused whilst you relax.

We offer 9 bedrooms – 1 bedroom with an 8ft circular bed, 1 triple room, 2 double rooms with child's day beds, 3 further double bedrooms, 2 twin rooms and 6 Bathrooms/shower rooms. All luxury linen and towels are provided with our own Stuckgowan toiletries.

Outdoor Space offers a large terrace with outside dining and a 7 seater hot tub all overlooking Loch Lomond.

A stunning, relaxing location in which to take in the surroundings of Loch Lomond and excellent access to venture further to other parts of Scotland.

Bedrooms	9
Conference rooms	1
Maximum boardroom style	20
Banquet (sit-down dining)	20
Reception (stand up buffet)	20

Affordable Luxury on Loch Lomond, exclusively yours.

STUCKGOWAN, LOCH LOMOND



1. Cruise Loch Lomond - 1.4 miles
2. Loch Lomond Leisure Boat Hire - 7 miles
3. Luss - 7 miles
4. Loch Lomond Sea Place - 14 miles
5. Cameron Club Golf - 14 miles
6. Horse Riding - 19 miles
7. Glasgow Airport - 30 miles

STUCKDARACH, LOCH LOMOND



Part of the Stuckgowan Estate Collection of properties - Stuckdarach is exceptional - a B listed building that has been completely renovated to give you a supremely stylish and comfortable house, along with charm and tradition.

It has been beautifully presented with the highest quality finishes both inside and out. Easy access from Glasgow or take a train from Balloch or Tarbet stations.

The furnishing is gorgeous – unusual and very appealing, the interiors will have you gasping with delight in every room. Beautiful rooms aplenty, there is always somewhere to enjoy some luxury time after a day

exploring and the large sitting room with its double height ceilings, French doors and wood burner will host many a splendid evening. An additional snug is perfect for children or as a break out space.

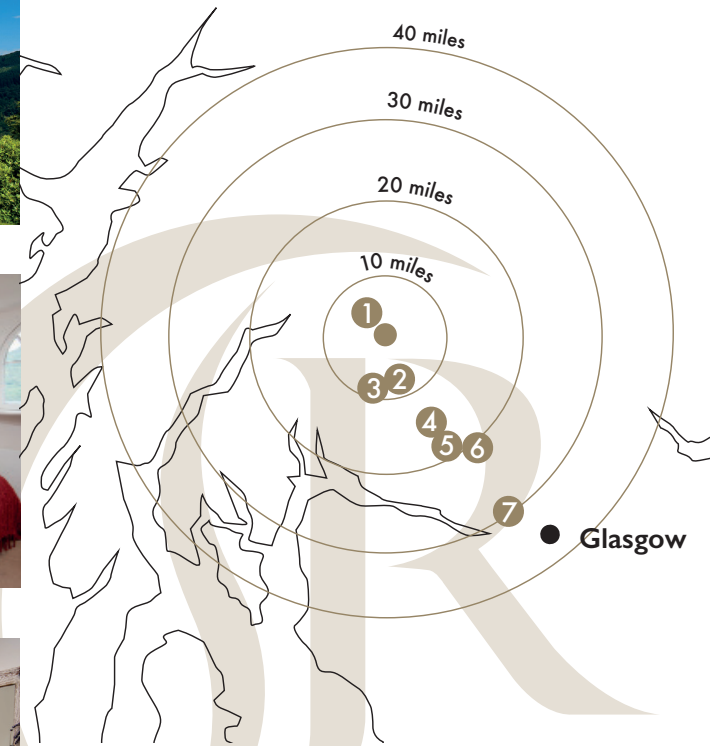
We offer 6 bedrooms - 2 Double Bedrooms with En-Suite Shower Room, 1 Twin Bedroom and 2 Double Bedrooms sharing a Shower Room and Bathroom. The sixth bedroom is a stunning Studio with Double Bedroom and Shower Room. All linen and towels are provided with our own Stuckdarach toiletries. Outdoor Space offers a private walled garden with lawns and patios and a splendid 7 seater hot tub, this is a house to relish.



A stunning, relaxing location in which to take in the surroundings of Loch Lomond.

Bedrooms	6
Conference rooms	1
Maximum boardroom style	12
Banquet (sit-down dining)	12
Reception (stand up buffet)	12

STUCKDARACH, LOCH LOMOND



1. Cruise Loch Lomond - 1.4 miles
2. Loch Lomond Leisure Boat Hire - 7 miles
3. Luss - 7 miles
4. Loch Lomond Sea Place - 14 miles
5. Cameron Club Golf - 14 miles
6. Horse Riding - 19 miles
7. Glasgow Airport - 30 miles