



WELCOME

For more details and to enquire email Susan Reid [sjr@susanreid.co.uk](mailto:sjr@susanreid.co.uk)



*Susan Reid Collection offers luxury exclusive use  
properties in Scotland.*

*When luxury becomes elegance and sophistication.*

## PROPERTY LOCATIONS



STUCKTAYMORE



STUCKDARACH



STUCKGOWAN



DUN ALUINN  
PERTHSHIRE



HAWKWOOD COUNTRY  
ESTATE

## DUN ALUINN, PERTHSHIRE



# A stunning design led mansion, new to the exclusive hire market

A sophisticated style mansion that boasts the luxury proportions of a country house and the lovability of being an original Scottish villa set in over 5 acres – this is your private-hire designer refuge that accommodates up to 18 people in picturesque Perthshire. A full service exclusive use property with 9 sumptuous individually designed bedrooms, each with a private en-suite bathroom.

This mansion boasts an abundance of space in which to enjoy within the open plan Drawing Room and Dining room with stunning views, Lounge and TV Room. The kitchen has been especially designed around catering where your Chef shall create some wonderful and authentic delights full of local produce.

Situated on an elevated site overlooking the town of Aberfeldy and the sweeping River Tay, Dun Aluinn enjoys 5.5 acres of private grounds with an extensive terrace with stunning views down the Tay Valley to Schiehallion. Enjoy the views down the valley, in our Wood Fired natural cedar Hot Tub, nestled in the woods beside the house, large enough for 10-12 guests. Dun Aluinn is available for hire as an Exclusive Use venue with catering provided by our partners Ballintaggart Farm, with full housekeeping,

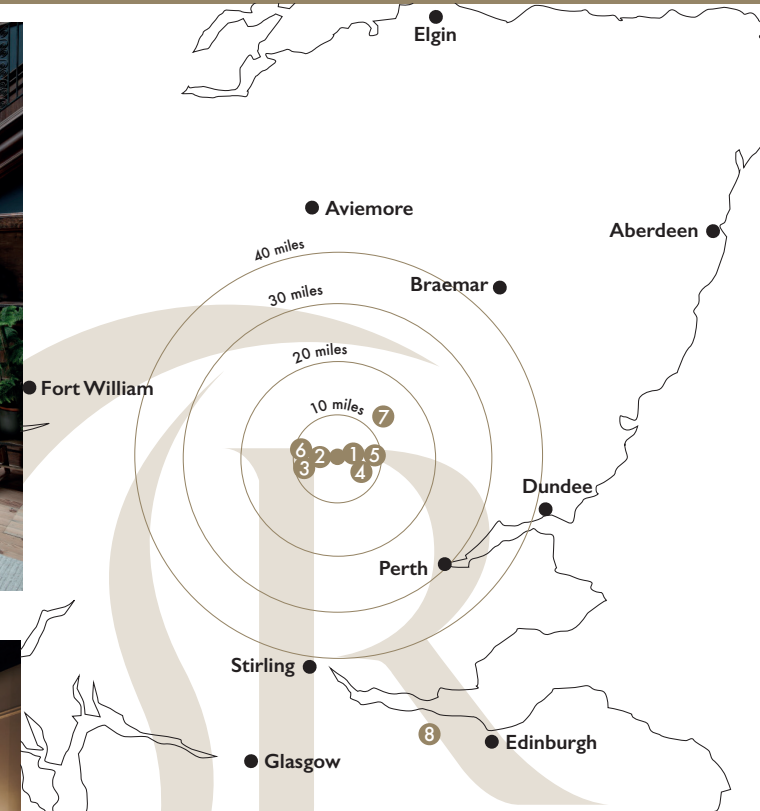
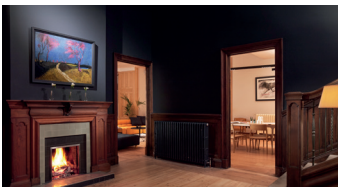
butler and concierge services. We will create totally unforgettable Highland Experiences for our guests together with our local world-class partners, from whisky tours & tasting to salmon fishing on the River Tay.

This is your private-hire designer refuge that accommodates up to 18 people

Bedrooms	9
Bathrooms	9
Conference rooms	1
Boardroom style	18
Banquet (sit-down dining)	50
Reception (stand up buffet)	50



## DUN ALUINN, PERTHSHIRE



1. Dewars Distillery 1 mile
2. Highland Safaris 3 miles
3. Loch Tay Safaris 6 miles
4. Wee Adventures 2 miles
5. Beyond Adventure 1 mile
6. Kenmore 6 miles
7. House of Bruar 11 miles
8. Edinburgh Airport 72 miles

## HAWKSWOOD COUNTRY ESTATE, ST ANDREWS



*The perfect house for golfing parties and leisure stays and a luxury venue for discrete private or corporate meetings, stays or special occasions.*

Hawkswood House and The Roundel are two private and exclusive use 5 star Scottish properties for hire set in the picturesque hamlet of Peat Inn, near St Andrews, Scotland.

Bedrooms	5 in each house, 10 in total
Conference rooms	2
Boardroom style	20
Theatre style	20
Banquet (sit-down dining)	40
Reception (stand up buffet)	60

Each property can be rented separately or clients can book both properties which are part of the Hawkswood Country Estate. This will give you a total of 10 en-suite luxury bedrooms across the two properties.

For keen golfers, Hawkswood House and The Roundel are the ultimate private properties, with easy access to dozens of fine courses. Whilst golf is bound to be the main attraction, they both have plenty to offer for romantic breaks, longer holidays, or groups of friends looking for a relaxing country escape.

In order to improve your short game skills, before visiting one of the great golf courses in nearby St Andrews, we have built your very own Short Game Area in our

grounds private with each house and our new 250 yard driving range opened Summer 2017.

Bowhill Bed and Breakfast, our latest property was launched to the market place in October 2017. Offering a further 4 super king/twin en-suite bedrooms, a private lounge, breakfast area and bar for residents – rooms can be booked on an individual basis or to supplement Hawkswood House and the Roundel.

*“Thank you for our wonderful stay. The House is ideal, every detail perfect”*

*Nick Faldo, Family & Friends,  
144th Open Championship, July 2015*



## HAWKSWOOD COUNTRY ESTATE, ST ANDREWS



1. Peat Inn Restaurant - 1 mile
2. St Andrews - 7 miles
3. Links of St Andrews Golf Courses - 8 miles
4. Kingsbarns Golf Course - 12 miles
5. Dundee Airport - 19 miles
6. Edinburgh Airport - 41 miles



## STUCKTAYMORE, LOCH TAY



*Part of the Stuckgowan Estate Collection of properties - Stucktaylor has beautiful grounds extending to about four acres. There are lawns surrounding the house and rolling towards the fields leading to Loch Tay.*

Part of the Stuckgowan Estate Collection of properties - Stucktaylor has beautiful ground extending to about four acres. There are lawns surrounding the house and rolling towards the fields leading to Loch Tay.

There are woodlands to the west of the house and a tumbling burn cascades through the trees, crisscrossed

by bridges linking the paths that meander through the magnificent variety of mature trees. Hidden in the woods there are three fire pits ranging from magnificent to intimate. The larger fire pit is perfect for a BBQ.

13 ensuite bedrooms able to accommodate 29 people. All rooms are king with one twin and three rooms offering triple occupancy. A large kitchen and breakfast room with Aga, Dining room with table and chairs to seat 26. Our

Sitting room leading on from the dining room enjoys breathtaking views over Loch Tay. The Large stone built 'Snug' with a significant open fire and our Library, also with open fire, TV and baby grand piano. There is a

Utility / Boot room with washing machine and tumble dryer and on the Lower Ground Floor a Media and entertainment room with 80' inch screen TV, DVD player and full sky package and Xbox One. Games room with pool table.

Outdoor Space offers a large terrace with outside dining and a 7 seater hot tub all overlooking Loch Tay.

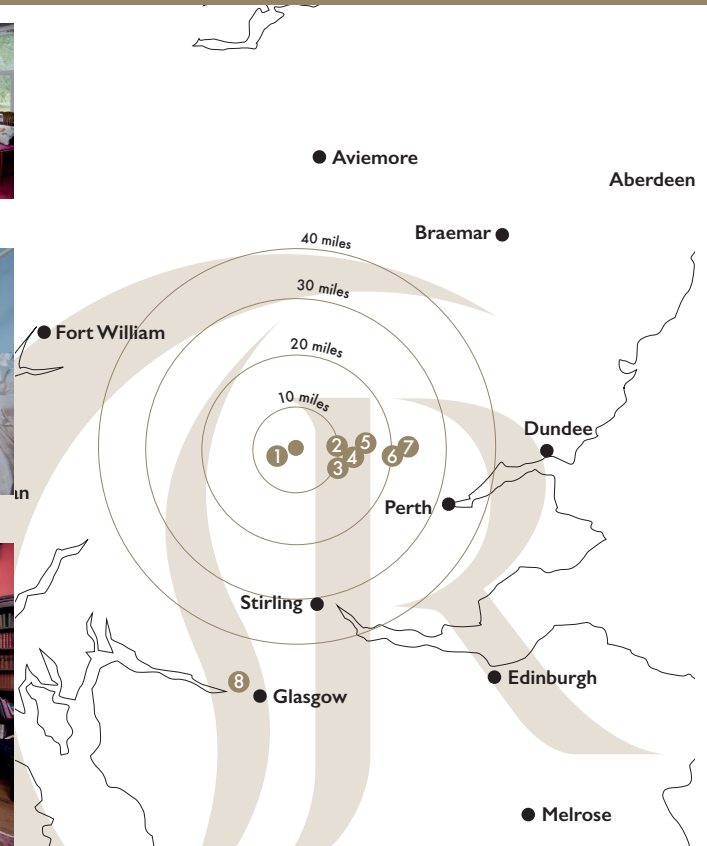
Loch Tay is a magnificent dark stretch of water, 15 miles (24 km) long and around 508 ft deep. It's the largest loch in Perthshire and one of the deepest in Scotland. To the north, the loch is flanked by the impressive bulk of the Ben Lawers mountain range, much of which is designated as a National Nature Reserve. Loch Tay is popular with sailing and water-sports enthusiasts and the small shingle beach near Kenmore is perfect for sunbathing.

*A magnificent memorable setting...*

Bedrooms	13
Conference rooms	2
Maximum boardroom style	26
Banquet (sit-down dining)	26
Reception (stand up buffet)	26



## STUCKTAYMORE, LOCH TAY



1. Falls of Dochart - 1 mile
2. The Scottish Crannog Centre - 13 miles
3. Loch Tay Safaris - 13 miles
4. Loch Tay Boating Centre - 13 miles
5. Mains of Taymouth Golf Course - 14 miles
6. Splash White Water Rafting - 22 miles
7. Dewars Aberfeldy Distillery - 23 miles
8. Glasgow Airport - 62 miles

## STUCKGOWAN, LOCH LOMOND



*Part of the Stuckgowan Estate Collection of properties - Stuckgowan dates from before 1820 and was built with elegant lancet windows and arched doorways as Gothic and Norman references but above all with grace and balance.*

Brought into the 21st century with gorgeous, carefully detailed renovations with stunning views of Loch Lomond. Easy access to the house from the Glasgow airport, or take a train from Balloch or Tarbet Stations.

With a breakfast bar and window seating area that holds 14, the kitchen is big enough to accommodate lavish breakfasts or late-night gatherings. There's also a study,

details to make your stay in this unmatched location incredible.

The snug is a comfortable room looking out to the gardens and the Loch with games, TV and a telescope to watch the stars at night. Also at the front is the luxurious lounge with log fire and leads into the dining room catering comfortably up to 20 guests. The media cinema room is a perfect distraction to pass the time of an afternoon or keep the children amused whilst you relax.

We offer 9 bedrooms – 1 bedroom with an 8ft circular bed, 1 triple room, 2 double rooms with child's day beds, 3 further double bedrooms, 2 twin rooms and 6 Bathrooms/shower rooms. All luxury linen and towels are provided with our own Stuckgowan toiletries.

Outdoor Space offers a large terrace with outside dining and a 7 seater hot tub all overlooking Loch Lomond.

A stunning, relaxing location in which to take in the surroundings of Loch Lomond and excellent access to venture further to other parts of Scotland.

*Affordable Luxury on  
Loch Lomond,  
exclusively yours.*

Bedrooms	9
Conference rooms	1
Maximum boardroom style	20
Banquet (sit-down dining)	20
Reception (stand up buffet)	20



## STUCKGOWAN, LOCH LOMOND



1. Cruise Loch Lomond - 1.4 miles
2. Loch Lomond Leisure Boat Hire - 7 miles
3. Luss - 7 miles
4. Loch Lomond Sea Place - 14 miles
5. Cameron Club Golf - 14 miles
6. Horse Riding - 19 miles
7. Glasgow Airport - 30 miles



## STUCKDARACH, LOCH LOMOND



*Part of the Stuckgowan Estate Collection of properties - Stuckdarach is exceptional - a B listed building that has been completely renovated to give you a supremely stylish and comfortable house, along with charm and tradition.*

It has been beautifully presented with the highest quality finishes both inside and out. Easy access from Glasgow or take a train from Balloch or Tarbet stations.

The furnishing is gorgeous – unusual and very appealing, the interiors will have you gasping with delight in every room. Beautiful rooms aplenty, there is always somewhere to enjoy some luxury time after a day

exploring and the large sitting room with its double height ceilings, French doors and wood burner will host many a splendid evening. An additional snug is perfect for children or as a break out space.

We offer 6 bedrooms - 2 Double Bedrooms with En-Suite Shower Room, 1 Twin Bedroom and 2 Double Bedrooms sharing a Shower Room and Bathroom. The sixth bedroom is a stunning Studio with Double Bedroom and Shower Room. All linen and towels are provided with our own Stuckdarach toiletries. Outdoor Space offers a private walled garden with lawns and patios and a splendid 7 seater hot tub, this is a house to relish.

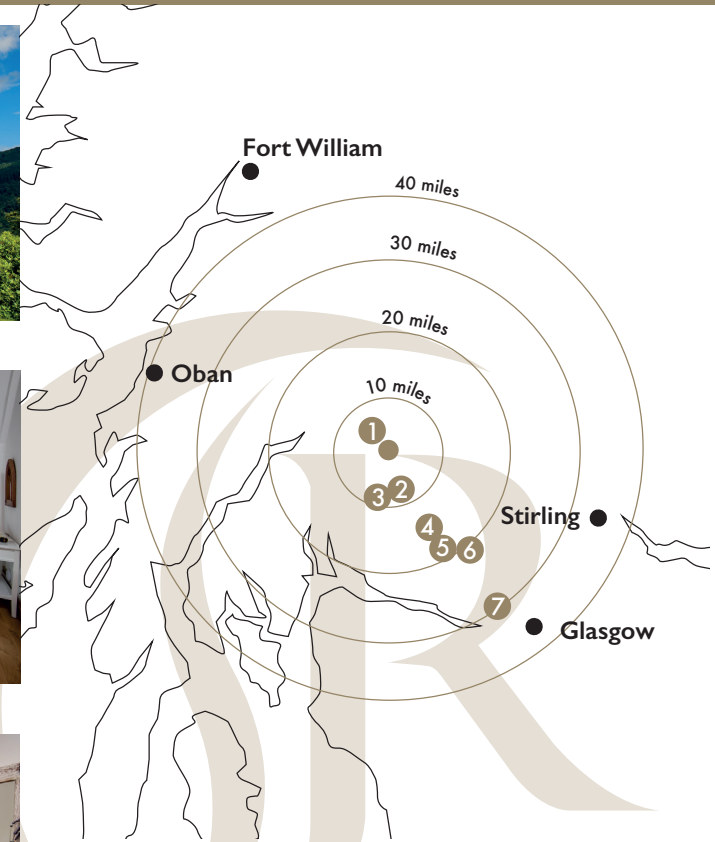
Bedrooms	6
Conference rooms	1
Maximum boardroom style	12
Banquet (sit-down dining)	12
Reception (stand up buffet)	12



*A stunning, relaxing location in which to take in the surroundings of Loch Lomond.*



## STUCKDARACH, LOCH LOMOND



1. Cruise Loch Lomond - 1.4 miles
2. Loch Lomond Leisure Boat Hire - 7 miles
3. Luss - 7 miles
4. Loch Lomond Sea Place - 14 miles
5. Cameron Club Golf - 14 miles
6. Horse Riding - 19 miles
7. Glasgow Airport - 30 miles